



SURVIVAL TECHNOLOGY SOLUTIONS FOR THE PASSENGER INDUSTRY

Trusted to Protect Lives





CONTENTS

4

Trusted to
Protect Lives

5

Partnering
with you to
deliver more



6

MES
Solutions

7

Marin Ark 2

8

Life Ark

10

Seahaven

12

Lifeboat Inspection

14

RaftXChange

16

Head start to
maritime safety
for new builds



17

Customisable
dry dock
management
solutions



20

Fire systems

24

Survitec Essentials

26

Lifejackets

28

Immersion suits



30

Polar lifesaving
solutions

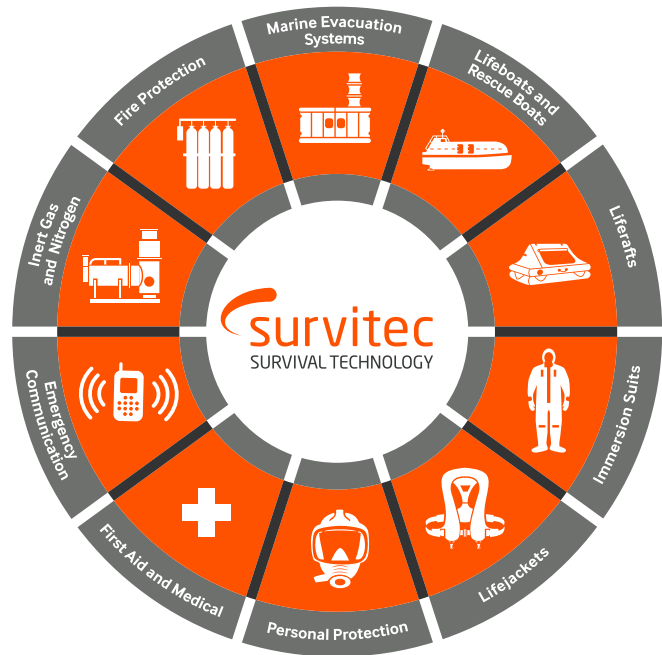

survitec
SURVIVAL TECHNOLOGY

TRUSTED TO PROTECT LIVES

Pioneering Survival Technology to protect your passengers and crew

We are pioneers of Survival Technology. Our wearable survival equipment, fire solutions and survival craft technology keep people safe when their life depends on it. We have 3,000 people that work with our partners in 96 countries to provide trustworthy solutions that reduce risk and help protect lives.

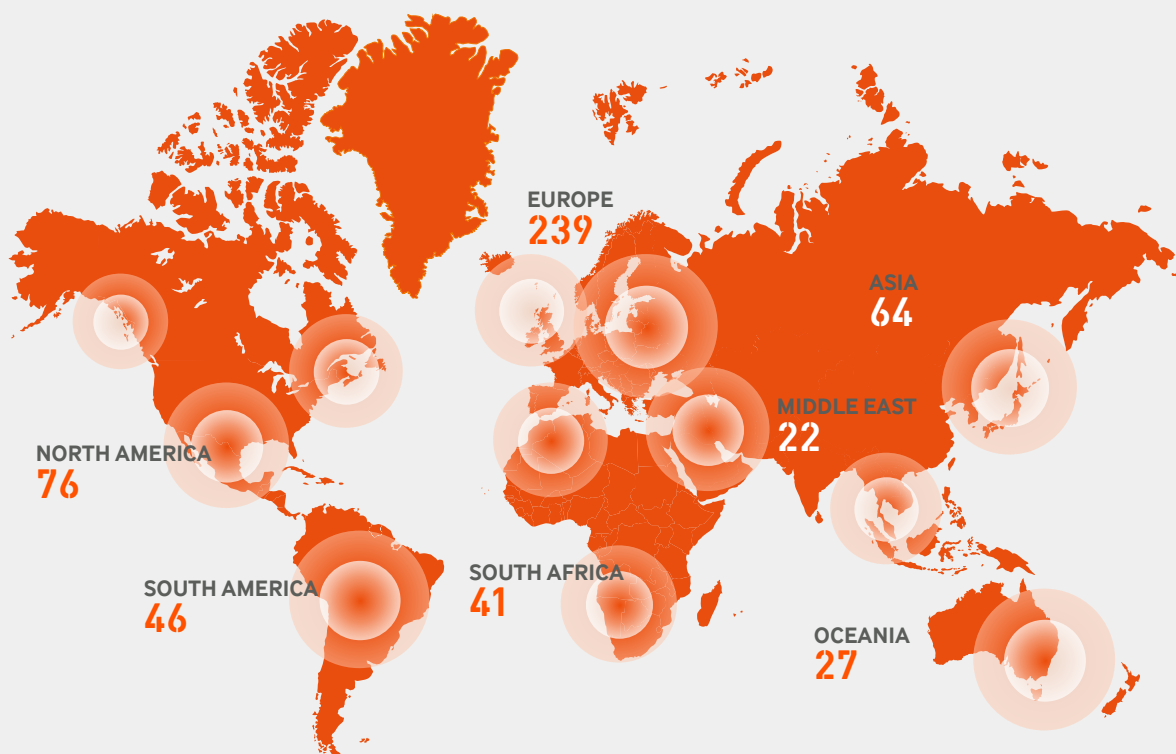
Why? Because We Exist to Protect Lives.



Crewsaver®



World's largest Survival Technology footprint



PARTNERING WITH YOU TO DELIVER MORE

Everything you need, everywhere you need it

Our extensive portfolio, coupled with our global footprint, ensures your passengers and crew have the equipment they need to keep them safe in an emergency.

With more Survival Technology solutions and service stations around the world than our nearest competitor, nobody can offer better last-mile global coverage than we can. We are determined to use our size and strength to take safety in a different direction – one that delivers new benefits to your business.

Whether your requirements are for one-off product sales or complete safety asset supply and management, our dedicated teams are always ready to listen to your challenges and are on hand to offer a comprehensive solution, built for your business.



MES SOLUTIONS

Protecting the passenger industry since 1979

Our Marine Evacuation System (MES) solutions are the first choice for the world's leading cruise and ferry operators, selected for their superior levels of reliability – a reputation that has been built up over many years through leading the way in innovation and offering unparalleled levels of safety. All of our systems are robustly tested, exceptionally rugged, compliant with the latest approval standards and most importantly offer you superior levels of reliability and increased confidence.

Each installation of our MES solution is custom-made to suit your ship requirements. Considerations include vessel weight, evacuation height and the number of passengers.

We pride ourselves on our superior design, innovation, expertise, consistent levels of reliability and our commitment to delivering real value to our customers.



Pioneers of the world's first MES solution

We are a company built on many world firsts and continuous innovation. In 1979, RFD, our original Survitec company introduced the world's first MES to the world. Since then, we have been pioneering the way in MES solutions, taking your safety to new levels.



MARIN ARK 2

Rapid & safe evacuation of up to 860 passengers
in less than 30 minutes

Our Marin Ark 2 system is one of the largest dry-shod MES in the world. The completely unique design offers carriage for 158 of your passengers and can be scaled up to accommodate up to 860 passengers if required.

You can be assured of the utmost stability and safety in the toughest sea conditions – Marin Ark 2 features simple crew actions and robust fully reversible liferaft, with multiple buoyancy compartments.

The innovative helical slide path integrates the benefits of a fully enclosed evacuation chute with the natural descent of a spiral slide – your crew members can even ascend to assist other passengers if required. One of the most dynamic design features of our system is the integration of a service winch into the stowage unit.

This allows the entire unit to be deposited onto a tug or truck during service periods thus in most cases eliminating the requirement for a crane during service.

Benefits

- ✓ **Designed with minimum crew actions to reduce the human element and improve reliability**
- ✓ **All primary liferafts inflate & both helical slide paths launch together in a single action**
- ✓ **Dual spiral slide path to the Marin Ark 2 allows for safe, rapid and controlled dry-shod descent for all evacuees**
- ✓ **Unique slide path design allows for crew ascent where necessary**
- ✓ **Fully reversible 158 person liferaft design with suspended floor ensures maximum thermal protection**
- ✓ **Revolutionary bowing system and evacuation slide path designed to meet the challenges of modern wide-beam vessels**
- ✓ **The flexible design allows for installation on the widest range of vessel configurations**



LIFE ARK

Trusted technology, enhanced safety

In the event of an emergency on board your vessel, your passengers and crew need to be able to disembark safely in less than 30 minutes.

Discover our advanced Marine Evacuation System (MES) with unique helical slide-based technology. Technology trusted by global cruise operators to protect passengers and crew for over 20 years. Now available for ropax ferries and small cruise ships.

BENEFITS:

- ✓ Helical slide ensures descent is safe, rapid, and intuitive
- ✓ Each system evacuates up to 600 passengers quickly and comfortably
- ✓ No restrictions and safe for all ages, sizes, and abilities, with room to assist injured passengers
- ✓ Single or double helical slide options available to meet your passenger capacity
- ✓ Available in a variety of SOLAS and non-SOLAS approved liferaft options to suit your needs
- ✓ Flexible design allows for installation on a wide range of configurations
- ✓ Reduced crew actions, rapid and hassle-free deployment
- ✓ Service support available on your regular trading routes through our global network



Improve your passenger experience

Life Ark has been developed for vessels with passenger capacities ranging from 300 to 1,500 with a maximum freeboard height of 23 metres. Designed with passenger experience in mind, ensuring a safe, rapid and intuitive descent for all ages and abilities with no restrictions on passenger size. Crew can also ascend the slide to assist passengers if necessary.

Life Ark+

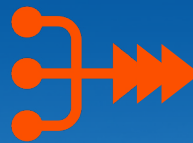
Expect cost efficiencies and reduced disruption to your operations from our extended service option of up to 30 months, with the standard 12-month service remaining if you choose it. With flexible solutions for all vessels, you can partner with us for a through life, fully managed MES solution.



Improve your passenger experience with unrestricted slide access for all ages, sizes and abilities



Access cost efficiencies from our extended 30-month service option



Reduce risk for error with built-in automated technologies, reducing crew actions and aiding rapid deployment



Explore flexible design with installation on a wide range of configurations



SEAHAVEN

Discover the world's largest inflatable lifeboat

Seahaven is redefining evacuation at sea. Borne from the collaboration of our aerospace, defence and maritime Survival Technology expertise, our two-lifeboat system is complementary to MES and evacuates up to 1,060 passengers in under 22 minutes. Rewriting what's possible in terms of safety, reliability, and deck footprint in one revolutionary product, Seahaven means a new era of potential for the passenger industry.

Transform your safety

With rapid-4-minute deployment and the ability to accommodate 1,060, your passengers and crew can quickly, safely, and comfortably evacuate. Once safely on board our ultra-reliable system travels independently for up to 24 hours, at a speed of six knots. Seahaven is intrinsically safe and can be launched by your crew with a push of a button. We've designed a system that automatically inflates, minimising crew actions and the need for human interaction.

1060

Evacuation capacity



Deployed in under
4 minutes

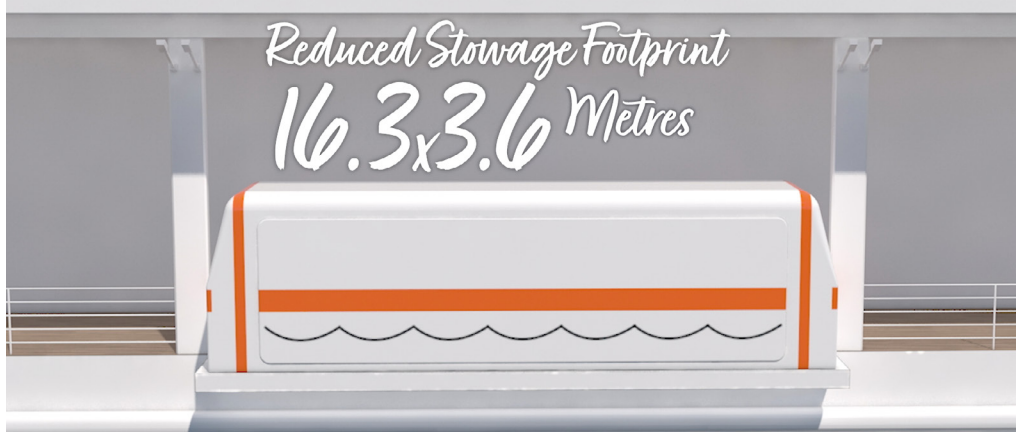


Beyond the standards for reliability

Seahaven is tried, tested and trusted by 30 of our world-class marine engineers, over five years in the making. Our application of aerospace methodologies brings a completely new dimension to marine industry reliability. Our robust quality processes and exhaustive testing goes way beyond what's essential, with our reliability test program setting a new standard of safety. Throughout the cycle of Seahaven you will benefit from operational efficiencies from extended service duration, reducing disruption to your vessel operations. What's more, on-board crew inspections and maintenance will also be reduced.

Your deck space unlocked

Seahaven opens up all kinds of vessel design possibilities, freeing up deck space and enabling new build ship designers and operators to explore retrofit opportunities, to completely reimagine your on-board environments and passenger experiences. By replacing conventional lifeboats and davits, you can take back up to 85% of deck space to revolutionise your passenger experience. Think of what could be possible with a reduced footprint of 16.3 x 3.6 metres fitted into a single deck.



LIFEBOAT INSPECTION 402

Regulation simplified, global compliance delivered

Our Lifeboat Inspection 402 solution allows your vessels to spend less time in port and your fleet managers and administrators save the time and effort of arranging multiple inspections with potential associated travel costs. Moreover, with our solution, there are no hidden costs or extra requirements such as Original Equipment Manufacturer (OEM) certification.

1 Annual and five-year inspections meeting SOLAS Chapter III and IMO MSC.402(96) requirements

2 Authorised multi-brand inspection covers all lifeboats, rescue boats, davits and hooks

3 All work carried out to consistent global standards by our multi-skilled certified Technicians

4 Fire systems and personal lifesaving equipment can be included

5 Unrivalled global network with 60+ Flag authorisations and Global Class approvals

6 Single point-of-contact streamlines administration and logistics

Since the IMO MSC.402(96) mandate of 2020, you are no longer obliged to use OEMs or their agents for your commercial fleet lifeboat inspections. As a result, regardless of the make and type, you can have your lifeboats, davits and accessories inspected, repaired and certified through our Lifeboat Inspection 402 programme.

7 Harmonised due dates reduces visit frequency and cost, with proactive due date monitoring and alerts enhancing compliance

8 Repair, refurbishment or replacement recommendations provided on completion of inspections

9 Some repairs and refurbishments can be actioned out on-the-spot to save time and cost of repeat visits

10 Supply and commissioning of new or replacement lifeboats, rescue boats, davits and hooks

11 Fixed price agreements help control costs

12 Port and service priority worldwide eliminates delays



RAFT X CHANGE

Everything you need. Everywhere you need it.

Why choose a liferaft rental and exchange model? By choosing a liferaft rental and exchange contract with Survitec, there is no capital investment required.

We offer a straightforward administration approach with a key account manager, backed up by an experienced global customer service team, facilitating all the preparation and logistics of your liferaft exchange. Above all, you can count on Survitec to provide you with complete peace of mind.

Key Benefits

- ✓ Liferafts are replaced with newly serviced, fully certified liferafts of same capacity and type
- ✓ Comprehensive network, ensuring availability in all key ports worldwide
- ✓ Supports a vessel's short port stay
- ✓ Reduces the amount of handling required
- ✓ Offers a full guarantee for the duration of the rental period
- ✓ Facilitates both an overall cost reduction and better cost management
- ✓ Less transportation required
- ✓ Highly skilled technicians, ensuring rafts are always in compliance with regulations





THE AGREEMENT ADVANTAGE

What to expect when you sign up to an agreement with us

Many customers choose to partner with us by signing an agreement. This delivers benefits that go beyond the standard, adding predictable pricing and budgeting, personal account management, due date monitoring and port priority.



Fixed, predictable prices

We can help you spread the costs and budget more easily. Whether it's a fixed price agreement or a full safety management contract.



Port priority

The risks of delays in port can be costly for your organisation. As an Agreement customer, port priority means your vessels come first and your sailing schedules are protected. Your continuing compliance and ability to trade are always prioritised.



Single point of contact

You will have a single point-of-contact throughout your agreement, with an experienced Account Manager backed by a dedicated customer service team who know your fleet and understand your needs. We coordinate multiple suppliers and handle all transactions in one currency and through one bank account to save you time.



Proactive due date management

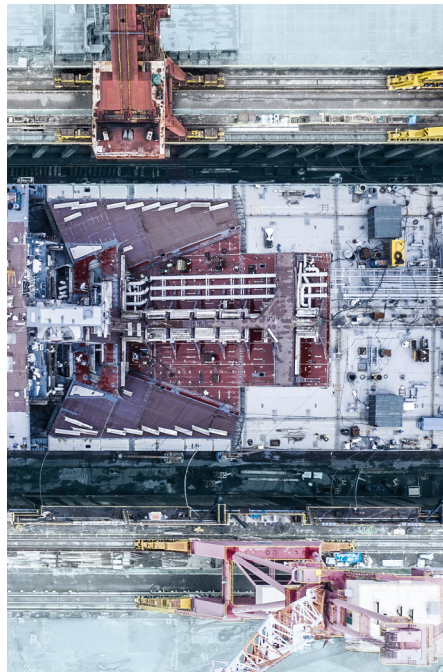
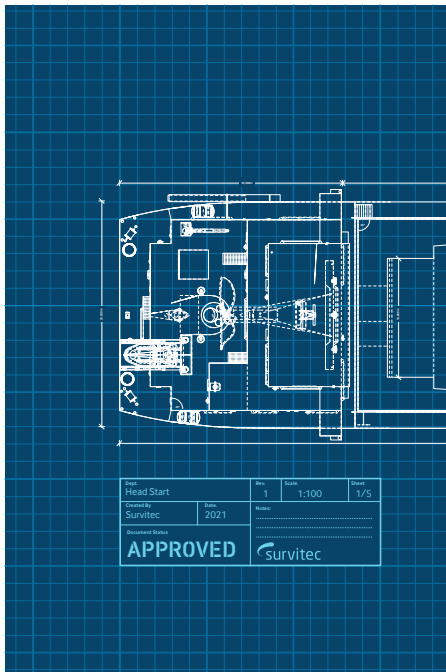
We manage the entire compliance schedule for you. We map the safety equipment on board your ship, alert you to upcoming due date requirements and schedule servicing in the most convenient ports.

HEAD START TO MARITIME SAFETY FOR NEW BUILDS

Setting you on course for a lifetime of safety at sea

From planning, through construction, to commissioning and beyond, we aim to deliver an unparalleled, safety-first service to set up your ship for a lifetime of safety at sea. We work closely with research institutions, regulatory bodies and class societies to keep abreast of industry trends and legislative requirements and to stay at the forefront of innovation in survival technology.

As a result, you can depend upon us for up-to-the-minute advice and recommendations around compliance and a full range of high-quality, SOLAS-compliant safety equipment. Plus, once your vessel is operational, an unrivalled global network to keep your crew, ship, cargo and passengers safe throughout many years at sea.



Planning the build:

Expert consultancy and advice.

Our technical expertise centres can identify the most appropriate solutions to afford maximum protection for your cargo and crew while also allowing for the daily routines and commercial operations of your vessel.

During the build:

Dedicated new build teams close to the shipyards.

From supplying the initial engineering drawings, to providing technical support during installation and commissioning, our local teams are close at hand to liaise with the yards and facilitate your build.

After the build:

Superior through-life support.

We offer a range of options to suit your needs, from “on demand” repairs, to fixed price agreements, to fully-managed safety contracts for personalised assistance with due date management and proactive service scheduling.

CUSTOMISABLE DRY DOCK MANAGEMENT SOLUTIONS

Going beyond compliance, to help you achieve more

Our global team is dedicated to bringing the industry's most advanced solutions to market, and our dry dock management offering is no exception. Designed specifically for owners and operators of passenger vessels, we recognise that all operator needs are different; we have therefore designed a dry dock management solution that is fully customisable.

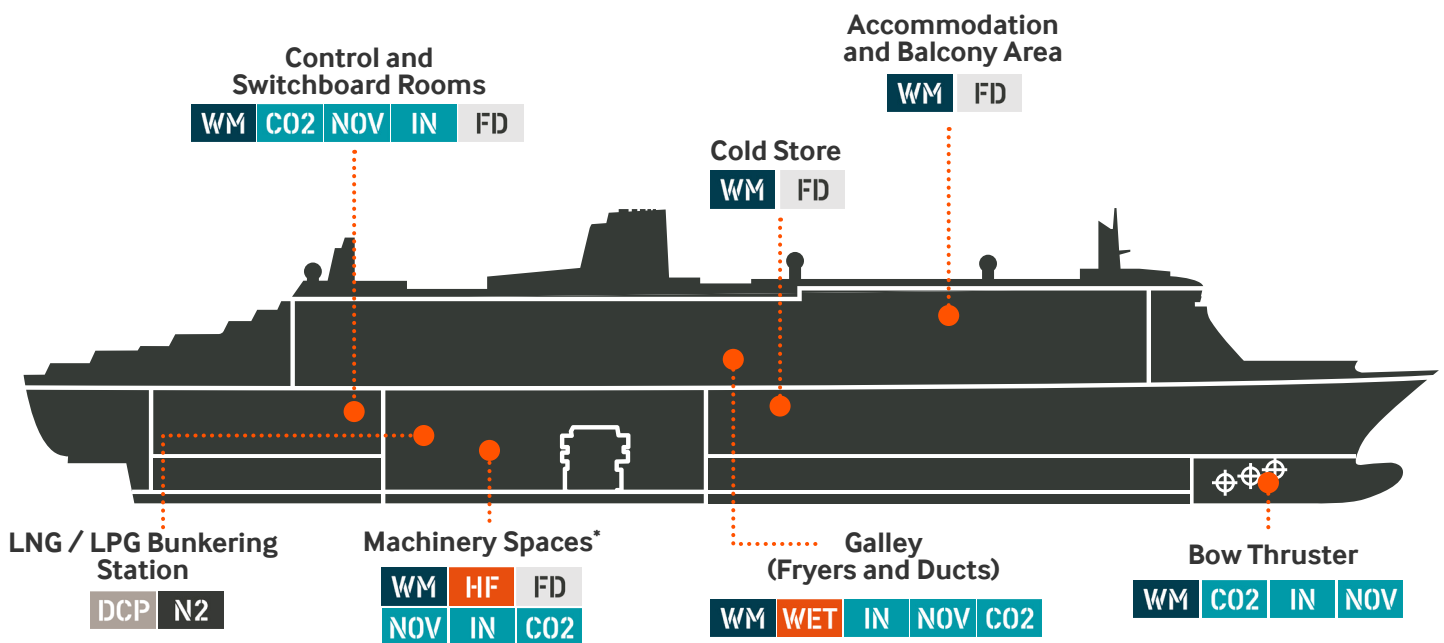
- ✓ **Simplify your compliance** – a personally managed service, tailored to your needs
- ✓ **Cover all your requirements** – work with one supplier, one bank, one currency
- ✓ **Access global coverage** – planned servicing around your schedule
- ✓ **Avoid costly delays** – leverage our global service network for unanticipated work



TRUSTED TO PROTECT YOUR PASSENGER VESSEL

Your Survival Technology partner for bow-to-stern protection against fire

As one of the leading fire solutions providers for the maritime industry, we offer a range of high-quality, SOLAS-compliant fire systems to afford maximum protection for your passengers and crew, whilst also allowing for the daily routines and commercial operations of your ships. We're also working hard to harness digital technologies to help you with all aspects of fire safety, from monitoring protected spaces for early detection of fire and rapid release of fire systems; to providing remote support and technical assistance in diagnosing faults and optimising operations; through to assisting with routine maintenance. And of course, we're always here to provide ongoing crew training if required.



System Key

Inert Gas Systems

- IG** Inert Gas
- N2** Nitrogen

Powder-Based Systems

- DCP** Dry Chemical Powder

Water Based Systems

- WP** Wet Pipe
- DEL** Deluge
- WM** Water Mist X-Flow
- MFW** Mobile/Fixed Water Monitors
- WL** Water Lance

Foam-Based Systems

- HF** High Expansion Foam
- LF** Low Expansion Foam
- WET** Wet Chemical

Fire Detection Systems

- FD** Fire Detection
- SDS** Smoke Detection System

Gas-Based Systems

- CO2** CO₂
- IN** Inergen
- NOV** Novec

The image shows a man in a light-colored shirt pointing at a large digital display. The display is a fire alarm control panel interface from Survitec. The interface is divided into several sections:

- Top Left:** A vertical list of ship deck plans, labeled from 81-10 down to 81-2.
- Center:** A large, detailed floor plan of a ship's deck, showing various rooms and equipment. Several points on the plan are highlighted with green and red circles, indicating sensor locations or active alarms.
- Bottom Left:** A data panel with the following fields:
 - NAME: 8-1.58 Deck 8 Wheelhouse RM8120
 - DESCRIPTION: #M15120
 - ZONE: 81
 - LOOP: 11
 - ADDRESS: 58
 - TYPE: Smoke/heat detector
 - DECK: 8
 - MVZ: 1
- Bottom Center:** A section for the WATER MIST SYSTEM, including a COMMON FAULT indicator and a MIST SYSTEM status indicator.
- Bottom Right:** A section for FIRE ALARM, showing a FIRE ALARM indicator and a FIRE FAULT indicator.

FIRE SYSTEMS

Failsafe protection for your passengers and crew



Safety and reliability

100 years experience supporting our customers to standards beyond minimum compliance to ensure the safety of passengers and crew.



Optimised design

Quality systems using high grade material and with reduced weight to lower fuel consumption and reduce environmental impact. An optimised footprint also saves space and allows for better technical or commercial use.



Ease of use and maintenance

Systems that are simple to install and easy to operate, with global inspections, servicing and spares readily available through our certified service network and supply chain.



Superior through-life support

We offer a range of options to suit your needs, from on-demand repairs to fully-managed safety contracts, to support you with all your fire and safety service requirements.

XFLOW Water Mist System

Our Water Mist Solutions can be applied for total flooding, local application firefighting (LAFF), accommodation areas, galley (Deep Fat Fryers) and ducts. Importantly, our solutions are versatile, giving you the option to easily integrate all systems into one. The secret to the effectiveness of our water mist technology lies in the unique water mist nozzle which circulates a combination of fine water droplets and water mist. This suppresses the supply of oxygen and absorbs the heat to extinguish fire quickly, whilst also using less water, to give you optimal system performance. Plus, it can be activated immediately, without the need to evacuate first.



Inergen® Clean Agent System

We're making extinguishing fires in enclosed spaces more efficient, with solutions that can be deployed quickly and effectively with minimal risk to your crew, equipment and the environment. Our Inergen® system is a fire extinguishing system specially designed for enclosed spaces. Inergen® is a clean agent that extinguishes the fire by reducing the oxygen level in the protected space, without compromising your health and safety. This system is especially suited for control rooms, electric switchboard rooms and rooms with sensitive equipment. It is often used as a complementary product to water mist or foam in water sensitive areas and is also very effective for galley ducts fire protection.



1230 Clean Agent System

Our 1230 system is an alternative to traditional fire extinguishing systems that contain components such as Halon and CO₂. This total flooding system is a high quality, compliant fire extinguishing system using a clean agent that is both environmentally friendly and harmless to people. It is the perfect choice for rooms with sensitive equipment such as pump rooms, compressor rooms and control rooms and for vessels where space is limited.



Deep Fat Fryer (Wet Chemical) Extinguishing System

Our Deep Fat Fryer Extinguishing System is a self-contained, automatically-operated fire extinguishing system that provides fast and effective protection against fires in deep fat vats. It can protect one deep fat fryer (50 litres, 800mm x 400mm), or up to three deep fat fryers (each 27 litres, 400mm x 360mm). Our system uses water with foam concentrate to form a film which separates the flammable liquid from the supply of oxygen to extinguish the fire quickly and prevent reignition, ensuring the highest protection for your passengers and crew.



High Expansion Foam System

Our High Expansion Foam Fire Extinguishing System provides extremely effective protection for machinery space applications (especially with alternative fuels such as methanol/ethanol) and can be installed as a total flooding solution for the entire machinery room or for individual compartments. This quick-activation system is designed to minimise fire and heat damage to equipment and structures. It is easy to install and operate and contains no hazardous decomposition products.



High Pressure CO₂ System

Our CO₂ system is a total flooding system for enclosed machinery spaces and galley ducts. Trusted by hundreds of vessels worldwide, our system is proven to be fast and effective and requires minimal maintenance making it your first choice for a reliable and cost-effective solution.



Dry Chemical Powder System For Bunkering Stations

This is an ideal solution for bunkering stations on dual fuelled LNG vessels. If flammable gases ignite, our Dry Chemical Powder fire extinguishing system (DCP system) breaks down the chemical reaction within the fire and suppresses the flames almost immediately. Our system is an effective, non-toxic solution that is harmless to your crew and the environment.



Our Survitec Essentials range has been developed with your regulatory requirements in mind, and the key products will ensure safety at sea for your passengers and crew.

Our range covers 69 safety products, including the spares and accessories you need to stay safe and compliant.

Key product categories include personal life saving appliance, fire extinction and personal protection products. Survitec Essentials products are made available in 12 key strategic selected ports, at defined lead-times, offering predictable availability globally.

If a product is included within our Survitec Essentials range, you can be rest assured, it is the product you need, where you need it.

Survitec's safety products makes supply easier

- Full range of Fire and LSA products
- Global availability
- One point of contact near your office
- One currency and one bank

Survitec's safety products provide consistent, high quality

- Same consistent, high-quality products available world-wide
- One regime for use, service -regime and spares
- Fixed predictable prices

Survitec's safety products gives value for money

- Rigorously tested for marine environment
- World leading brands with high performance reputation
- Premium and budget options available



Key ports & leadtimes

The following map provides our customers with a clear overview of the key ports Survitec Essentials' range of products are available from and the guaranteed lead-times at each port.



LIFEJACKETS

Pioneering lifejackets to protect your passengers and crew



Seacrewsader 275N 3D lifejacket

An easy to clean solution, our Seacrewsader 275N 3D is the right choice to protect your crew who are looking for a reliable and comfortable SOLAS lifejacket. The modular cover system means the cover can also be changed to suit your needs.

Benefits:

- ✓ Durable wipe clean cover
- ✓ EXOLOK to prevent the gas cylinder from becoming loose
- ✓ Foam padded cover for added impact protection
- ✓ Fusion 3D designed lifejacket sits off your neck, ensuring you are unhindered to work
- ✓ Unique bladder distribution for enhanced in-water performance
- ✓ Fitted with an array of features including a buddy line and beacon status indicator
- ✓ Two inspection zips for inflation mechanism and beacon status



Premier Compact lifejacket

Save valuable space on board your vessel. Driven by regulation changes for lifejacket accessibility on cruise ships, and customer demand for reduced bulk and improved storage options. We have designed the Premier Compact - a 49.2% smaller alternative (by volume) to the original Premier.

Benefits:

- ✓ Improve evacuation safety with the anti-snag design
- ✓ Raise in-water support with 150N of buoyancy foam
- ✓ Enhance user experience with comfortable, intuitive abandonment PPE
- ✓ Identify crew quickly with the yellow option
- ✓ Save time when stowing, no manipulating or folding required
- ✓ Extended product life with the durable outer cover
- ✓ Single block foam construction reduces moisture retention and mildew build up



Premier Compact
Crew option



IMMERSION SUITS

Keep safe and compliant with our immersion suit range

SeaEco immersion suit

Constructed from 5mm flame-retardant neoprene, this abandonment suit is designed for use with a certified lifejacket and is ideal for your vessels destined for cold water regions.

Benefits:

- ✓ Flame retardant 5mm neoprene with knitted polyester backing for durability
- ✓ Easy to close waterproof main zipper in soft PU/plastic
- ✓ Detachable gloves for thermal protection whilst maintaining dexterity when needed
- ✓ Integrated neoprene hood and watertight wrist seals to retain heat and prevent water ingress
- ✓ Rubber soles for optimal grip on slippery surface
- ✓ Vacuum packed option for extended service intervals (max ten years) and more compact stowage
- ✓ SOLAS (six hour) approved



SeaPass immersion suit

SeaPass is ideal for installation on board passenger vessels or as an additional insurance on board smaller expedition craft. When worn with a lifejacket, this suit is approved as a suitable alternative to thermal immersion suits according to Norwegian Maritime Directorate's (NMD's) regulations.

Benefits:

- ✓ Extremely lightweight and easy to store
- ✓ Attached five-finger gloves for thermal protection
- ✓ Integrated neoprene hood to retain heat and prevent water ingress
- ✓ Shoes can be worn either on the outside or inside of the suit
- ✓ Vacuum packed option for extended service intervals (max ten years) and more compact stowage
- ✓ SOLAS (one hour) approved



SeaBreeze CTV immersion suit

Designed with focus on ergonomics, comfort functionality for the purpose. The SeaBreeze CTV is manufactured in lightweight and yet durable fabrics, making it an ideal for both a constant wear work suit or for use on board smaller expedition craft. Designed to be worn with a lifejacket or buoyancy aid.

Benefits:

- ✓ Ergonomic pre-shaped Y-construction offers excellent freedom of movement
- ✓ Detachable gloves for thermal protection whilst maintaining dexterity when needed
- ✓ Separate soft comfortable neoprene hood stored in back pocket
- ✓ Durable Superlight fabric with excellent breathable properties
- ✓ Waterproof zip in neoprene neck seal for easy donning and comfort
- ✓ Knee and seat reinforcement for extra protection
- ✓ SOLAS (one hour) and ISO approved



Pair the SeaBreeze CTV suit with a buoyancy aid from our leisure Yak brand, which includes an extensive range perfect for expedition activities.

Example: Xipe 60N buoyancy aid – available in blue or red



Protecting your guests during cruise expedition activities



POLAR LIFESAVING SOLUTIONS

Essential survival equipment for expedition cruises

Protect the lives of your crew and passengers in extreme environments with our Polar Code survival kit range.

Designed by Hansen Protection, our Norway-based cold water PPE specialists, our Group (GSK) and Personal (PSK) Survival Kits are fully compliant and contain the essential items needed for survival in harsh polar regions.

Introduced on 1st January 2017, the Polar Code acknowledges that polar waters may impose additional demands on ships. This mandatory framework for ships operating in polar waters mandates the carriage of GSK and PSKs based on the number of people on board.

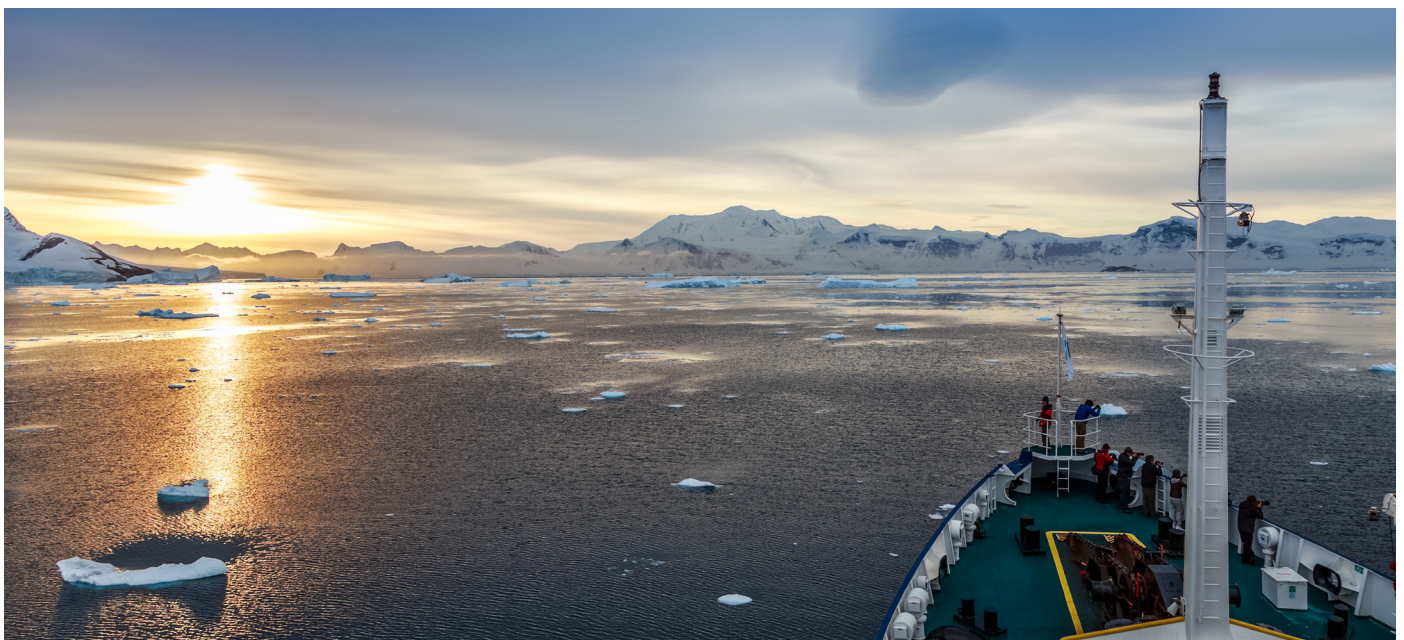
Personal Survival Kit

Designed to withstand average temperatures below 0°C, our Personal Safety Kits contain all the essential equipment to meet Polar Code regulations and support the requirement for minimum five days survival upon escape and evacuation.



Group Safety Kits

Our Group Survival Kits meet the Polar Code regulations and should be carried whenever a voyage is anticipated to encounter ice conditions which may prevent the lowering and operation of survival crafts. GSKs should be carried to cover at least 110% of the persons on board the ship.





CONTACT...

Our dedicated sales teams at
cruise@survitecgroup.com
info@survitecgroup.com



GET IN TOUCH

SURVITEC

4th Floor, 12 Finsbury Square, London, EC2A 1AS, United Kingdom

Email: info@survitecgroup.com

www.survitecgroup.com

Copyright Notice

© Survitec Group 2023. All rights reserved.

Disclaimer

This document provides general information about Survitec and its companies, its products and services, and summarises general capabilities and offerings which we deem to be of relevance to our customers. Whilst Survitec has taken appropriate steps to ensure the accuracy of the information contained in this document, Survitec gives no warranty regarding the accuracy or completeness of such information.

This presentation was prepared to provide information and does not constitute a contract. Survitec reserves the right, without prior notice, to change, delete, supplement, or otherwise amend at any time the information, images, and offerings contained in this presentation, or other documents. Survitec shall not be liable for any loss or damage of whatever nature (whether direct, indirect, consequential or other) that may arise as a result of any third party relying on the information contained in this document (but nothing in this disclaimer excludes liability for death or personal injury arising from negligence or any fraudulent misrepresentation).

For further detailed information, prices, terms and conditions, customers should contact Survitec at info@survitecgroup.com

V4