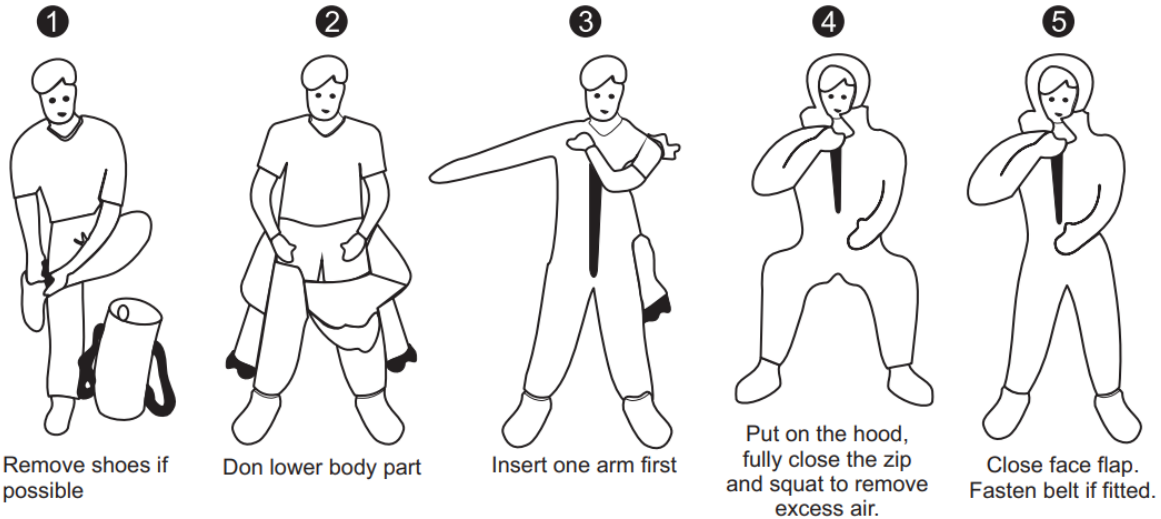


## Insulated Thermal Protective Immersion Suit 8806, 8808, 8810 and 8800Mk2

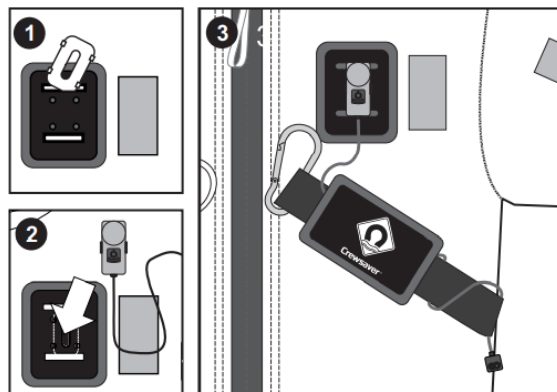


### Donning Instructions



**Note:- 8810 or 8800Mk2 Immersion suits must be worn with an approved lifejacket**

### Light fitting instructions for Crewsaver CSL Light for 8806 and 8808 Immersion Suits



- ① Put the light back plate behind the light retaining fabric.
- ② Press the light firmly on the backing plate until you hear a "click".
- ③ Pass the light flex through the belt loop and wrap round the belt twice so that the switch hangs down at the side of the suit. Light will automatically operate when immersed in water

### Use and Maintenance:

- ① Store the immersion suit in a clean dry place.
- ② Do not compress the suit as it may damage the buoyancy and flexibility of the fabric.
- ③ When packing the immersion suit always roll never fold the suit, as this can damage the suit.
- ④ Rinse with fresh water after each use and allow to dry thoroughly.
- ⑤ Regularly lubricate zipper when zipper is in open position.
- ⑥ Re-pack suit with zipper in open position.
- ⑦ To ensure adequate strength and water tightness of the seams and closures of the immersion suit, it is recommended that the suit be subjected to an air pressure test at intervals not exceeding three years, more frequently for suits over ten years old. (MSC/Circ.1114)
- ⑧ Attention: Do not cut or puncture the material.
- ⑨ Attention: The inherent buoyancy of this suit may prevent escape from enclosed spaces. It is recommended that the suit be donned for use on a weather deck and not in the vessel or cabin.

# Insulated Thermal Protective Immersion Suit 8806, 8808, 8810 and 8800Mk2



## 8806 and 8808

### **Application:**

Used for both seaman and passengers. Applies to unrestricted service.

**Designed to be worn without a lifejacket MED/1.6b**

### **Standard**

SOLAS 74 Reg. 111/4, 111/7, 111/22, 111/34, X/3 as amended by MSC.47(66), MSC.216(82)  
IMO Resolution (LSA Code), I, II as amended by MSC.207(81), MSC.218(82)  
HSC Code 1994 MSC.36(63) and HSC Code 2000 MSC.97(73) 8  
IMO Resolution MSC.81(70), MSC.200(80), MSC.226(82), MSC.323(89)  
MSC/Circ.1046

### **Approval**

**8806 Certificate No. 75 984 - 09 HH**

**8808 Certificate No.**

**Module B: MED080718WS/001 - Module D: MED148817WS/005**

### **Introduction to Product**

**Model 8806:** Insulated thermal protective immersion suit made of water proof Terylene oxford textile and polyethylene foam lined providing a minimum 142N of buoyancy.

**Model 8808:** Insulated thermal protective immersion suit made of 5mm neoprene with a minimum buoyancy of 150N.

**Other Information** Reflective tape >500cm<sup>2</sup>, Donning time < 2 minutes, Weight < 5.0kg

**Fitted with:** 1 x Whistle, 1 x Zipper lubricating oil, 1 x Packing Bag and User manual.

For use, care and maintenance instructions please see the front of this leaflet.

## 8810

### **Application:**

Used for both seaman and passengers. Applies to unrestricted service.

**To be worn with an approved lifejacket.**

### **Standard**

SOLAS 74 Reg. 111/4, 111/7, 111/22, 111/32, 111/34, X/3 as amended by MSC.47(66), MSC.216(82)  
IMO Resolution (LAS Code) I, II as amended by MSC.207(81), MSC.218(82)  
HSC Code 1994 MSC.36(63) and HSC Code 2000 MSC.97(73) 8  
IMO Resolution MSC.81(70), MSC.200(80), MSC.226(82), MSC.323(89)  
MSC/Circ.1046

### **Approval**

**Module B: MED080718WS/002 - Module D: MED148817WS/006**

### **Introduction to Product**

Neoprene Insulated thermal protective immersion suit. Donning time < 2 minutes, Weight < 5.0kg

**Other Information:** Reflective tape >400cm<sup>2</sup>, buddy line (8800MK2 only), 1 x Packing Bag and User manual.

For use, care and maintenance instructions please see the front of this leaflet.

## 8800Mk2

### **Application:**

Used for both seaman and passengers. Applies to unrestricted service.

**To be worn with an approved lifejacket.**

### **Standard**

SOLAS 78/78 as amended Reg. 111/4, 111/7, 111/22, 111/32, 111/34, X3  
1994 and 2000 HSC Code 8  
IMO Res. MSC 48(66) (LSA CODE) I, II  
IMO Res. MSC 81(70) as amended by, IMO Res. MSC 200(80), MSC 226(82), MSC 323(89)

### **Approval**

**Module B: MED080718WS/002 - Module D: MED148817WS/006**

### **Introduction to Product**

**Neoprene Insulated thermal protective immersion suit. Donning time < 2 minutes, Weight < 5.0kg**

**Other Information:** Reflective tape >400cm<sup>2</sup>, buddy line (8800MK2 only), 1 x Packing Bag and User manual.

For use, care and maintenance instructions please see the front of this leaflet.