



 survitec

INFLATABLE WALLS TRAINING SYSTEM

MODULAR, RAPIDLY DEPLOYABLE TRAINING SOLUTION

TRAINING IS SAFETY

Law enforcement and military personnel around the world face the most uncertain circumstances on a daily basis. They are required to frequently enter into unfamiliar built environments to assess or diffuse a threat. When they enter, their lives are often at stake. This is further compounded by the unpredictable and ever evolving threat that is presented today. It is their job to prepare. To understand every possible aspect ahead of time, every entrance, exit, doorway, window, corridor and corner and navigational layout of a structure. In order to do this they require a training system that allows them create immersive operative environments to help improve performance and enhance survivability by increasing familiarisation and boosting confidence. At Survitec, we are committed to the preservation of life through the pursuit and introduction of innovation. Introducing the Inflatable Walls Training System (IWTS). A new solution that will enable law enforcement and military to meet critically important training objectives.





A TRAINING SYSTEM OPTIMISED FOR TODAY'S TACTICAL OPERATOR

The Inflatable Walls Training System is a next generation training experience for military and law enforcement where users can recreate virtually any tactical or active shooter scenario in any terrain or location. IWTS is comprised of a series of lightweight and portable inflatable walls, available in 6 modular shapes that fix together to replicate any physical structure. The walls are composed of a two-piece construction of a tough vinyl outer skin that can be customised per user requirements and a durable inner bladder. Each wall is inflated with tailored inflation and deflation control to provide an extremely robust structure at a working pressure of just 0.5 psi. Once inflated, the robust IWTS can withstand the force of all training ordnance and is tested and approved for use with General Dynamics Simunition™, non-lethal training ammunition. This ensures operators can use their own weapons encouraging familiarity and enhancing realism.

Unlike other remote training solutions, IWTS is rapidly deployable and flat packable, has a small operational footprint removing the need for multiple tools, is easy to store and transport and can be reconfigured in minutes allowing operational tactics to be refined, challenging even the most seasoned operators with constantly evolving objectives.

A NEW STANDARD IN DEPLOYMENT PERFORMANCE

RAPID DEPLOYMENT...



APPROX
2
MINUTES
PER WALL



APPROX
20
MINUTES TO BUILD
A SIMPLE 2 ROOM
STRUCTURE

APPROX
35
MINUTES FOR AN
800SQ.FT SHOOT
HOUSE



2
HOURS FOR A
SMALL OFFICE
BUILDING

3
HOURS FOR
A SMALL
VILLAGE



Due to its shape and structure IWTS can be deployed anywhere and on any landscape including uneven ground. The system features enhanced integrated stability through the use of an internal weight system with wider load spread. This includes environments such as desert sand, marshy forests, snowy terrains or large vessels. IWTS can also be deployed in the rain as it is 100% waterproof or in direct sunlight as the material is fully UV resistant.

ANYWHERE

DESIGNED TO WITHSTAND THE MOST EXTREME FORCE

CAN WITHSTAND ALL TRAINING ORDNANCE

Resistant to a number of training weapons including smoke grenades and hot gun barrels

TEAR AND ABRASION RESISTANT

Robust exterior skin with internal air holding bladder – the core of the product, built to survive extreme wear and tear

100% WATERPROOF/UV RESISTANT

Designed to survive punishing environmental elements including rain, snow and high temperatures

INFLATES TO A SOLID 0.5 PSI STRUCTURE

Replicates the feel of a real wall. Participants can interact/impact with structure without damaging it or themselves

IMPROVED MATERIAL SPECIFICATION

Stronger, more robust materials with enhanced impact performance and product longevity

INCREASED SERVICE LIFE

Quality assured construction methods enable extended 5 year warranty and low cost support packages



FULLY MODULAR AND RAPIDLY RECONFIGURABLE

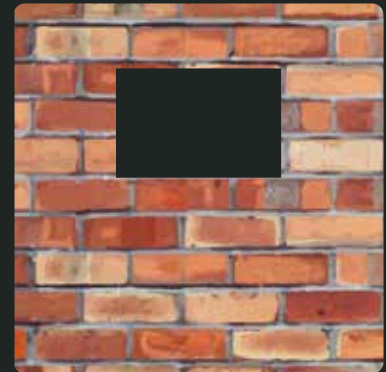
Each wall component is designed to be compatible with one another regardless of shape. Strict production tolerances enable walls to combine easily into any configuration. This modular nature enables users to create any structure using our 6 most commonly used shapes. Each wall is attached via our heavy duty carabiners. The carabiners can also be used to attach banners with operational instructions or conduct.



FULL WALL
2300 X 3000MM



DOOR WALL
2300 X 3000MM



WINDOW WALL
2300 X 3000MM



HALF WALL
1150 X 3000MM



VERTICAL HALF WALL
2300 X 1500MM

OPTIONAL EXTRA:



BREACH WALL
2300 X 3000MM

CREATE VIRTUALLY ANY PHYSICAL STRUCTURE

Meet any operational requirement, fit any budget



Attached via carabiners to multiple connection positions

INFLATABLE WALLS TRAINING SYSTEM ARCHITECTURE



All walls have 3 air fill valves for easy inflation and topping up even when in position

Chloroprene rubber air bladder

50mm hook and loop skin closure

Windows and doorway walls have a hook and loop strip to allow the application of "rapid screens" that quickly converts any window or doorway wall into a full wall

Door insert

Vinyl skin

Multiple steel carabineer clip positions (both sides)

Webbing carry handles

Moulded PVC door handle

Tailored pressure release valve (side of wall)

Moulded PVC hinges

Individual serial number (side of wall)

Door insert fill valve

Non return leaffield D7 air fill valve (side of wall)



Improved transportation through stronger and larger bags that enable rapid recall

7kg steel anchor weights, fit in hook and loop pouch on skin at bottom

- APPROVALS:**
- WALLS:**
- AS9100C
 - ISO9001:2015
- PRESSURE RELEASE VALVES**
- ISO 9650
 - ISO 15738

IWTS PACKAGES

Instant training environment for tactical skills training.

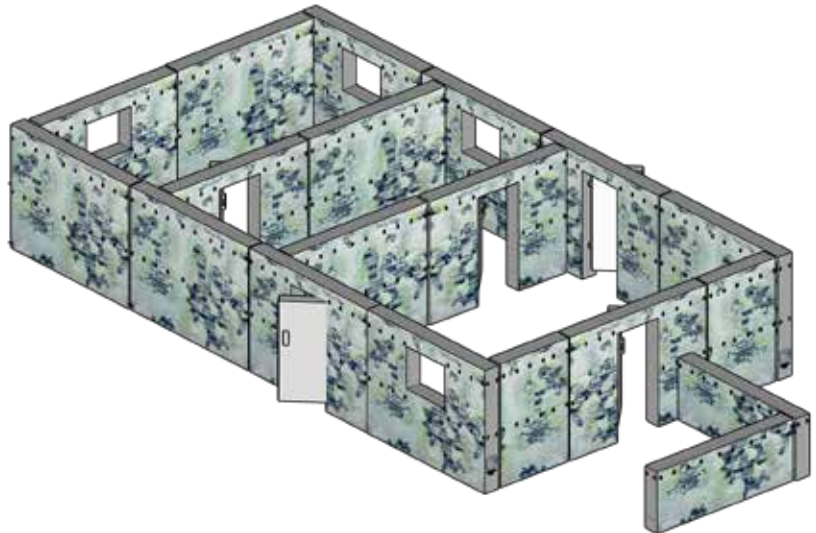
The IWTS packages provide a unique training environment to test tactical skills through versatile scenarios. Designed for easy and quick movements to help with flow, communication, and the ability to train operators to the highest standard, IWTS can be installed anywhere, anytime.

As the package levels increase, it enables larger training capabilities. Unlike competitor systems, Survitec offers expansion packs to easily upgrade your existing IWTS suite without the cost of a new package.

LEVEL 1

The Level 1 package provides a solid foundation for basic tactical training in different building configurations such as entry clearance, hallways and center/corner fed rooms.

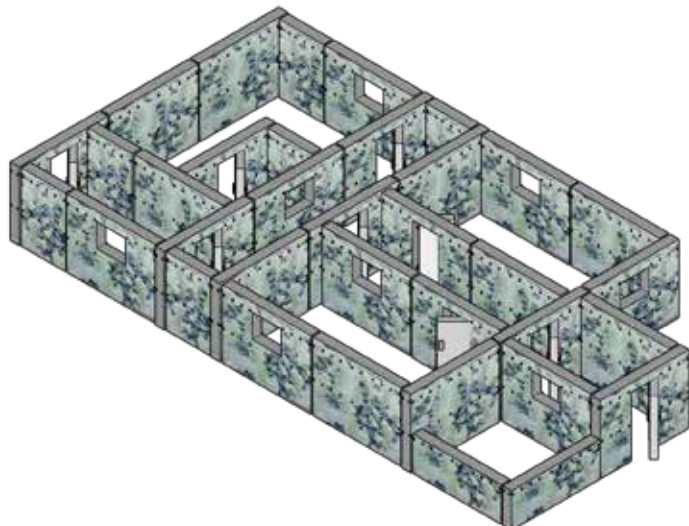
Wall / Pack	
Full Wall	6
Window Wall	4
Door	5
1/2 Vertical	2
1/2 Horizontal	2
Total Weight	542kg / 1195lbs
Storage Space	3.7m ³ (130.6 ft ³)
Pallet Space	2
Part Number	5363400X
Total Build Space	81.6m ²



LEVEL 2

Level 2 creates a larger foundation while incorporating training capability between rooms, hallways, passageways or open areas.

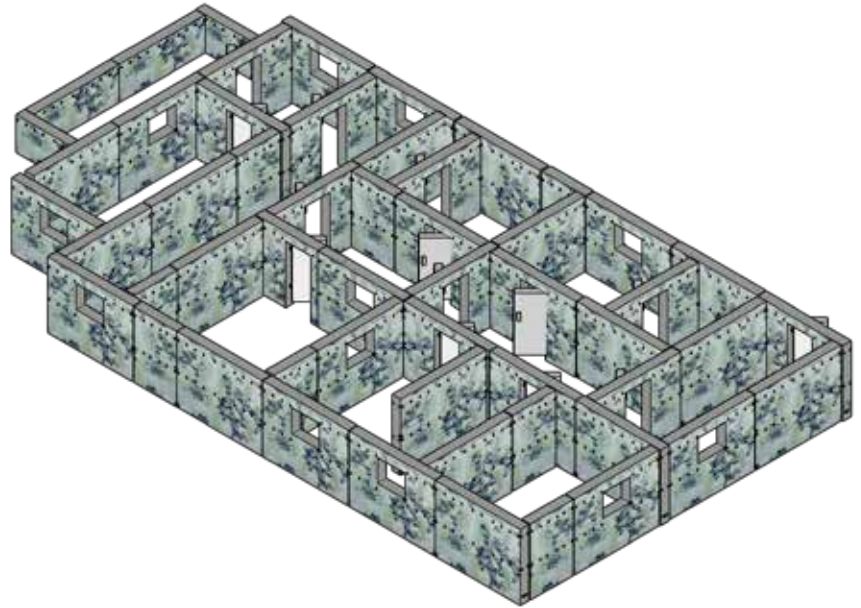
Wall / Pack	
Full Wall	10
Window Wall	8
Door	9
1/2 Vertical	6
1/2 Horizontal	2
Total Weight	992kg / 2187lbs
Storage Space	6.92m ³ (244.4ft ³)
Pallet Space	5
Part Number	5363500X
Total Build Space	132.6m ²



LEVEL 3

Level 3 enables target training scenarios in connected rooms, hallways, open areas and various entry points. Multiple building structures can also be created.

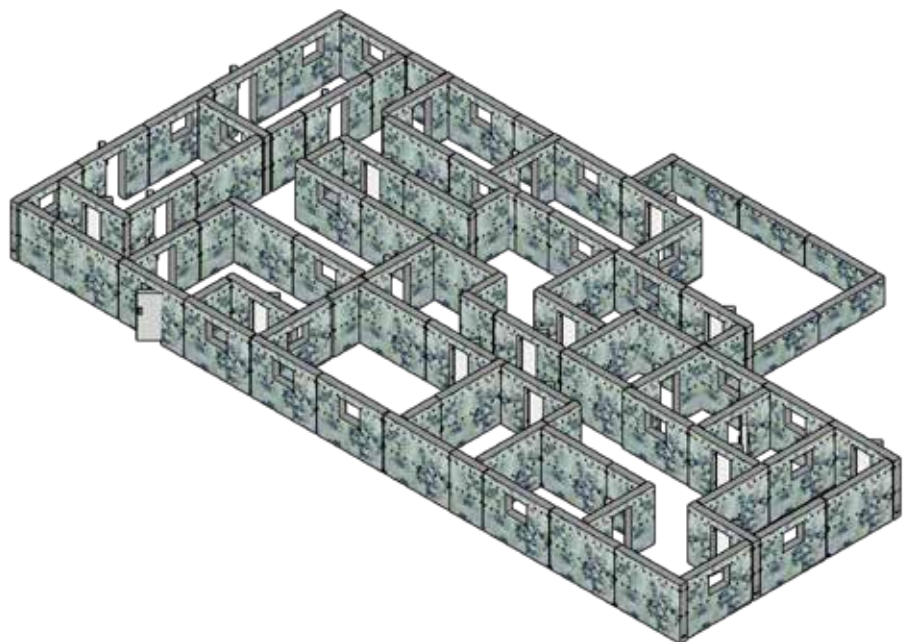
Wall / Pack	
Full Wall	16
Window Wall	12
Door	14
1/2 Vertical	8
1/2 Horizontal	4
Total Weight	1534kg / 3382lbs
Storage Space	8.6m ³ (303.7ft ³)
Pallet Space	6
Part Number	5363600X
Total Build Space	275.6m ²



LEVEL 4

Level 4 is the largest package available and allows the end user to create complex building structures with multiple building capability and target training scenarios simultaneously.

Wall / Pack	
Full Wall	20
Window Wall	24
Door	24
1/2 Vertical	18
1/2 Horizontal	6
Total Weight	2564kg / 5652lbs
Storage Space	16.39m ³ (578.8ft ³)
Pallet Space	10
Part Number	5363700X
Total Build Space	398.9m ²



OPTIONAL ACCESSORIES

Upgrade your IWTS package through cost saving expansion packs

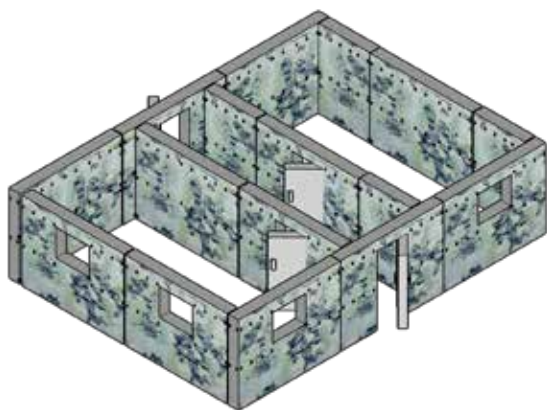
Easily scale up to the next level with the expansion packs and breach door system to provide an endless stream of scaled builds unique to your resources.

EXPANSION PACKS

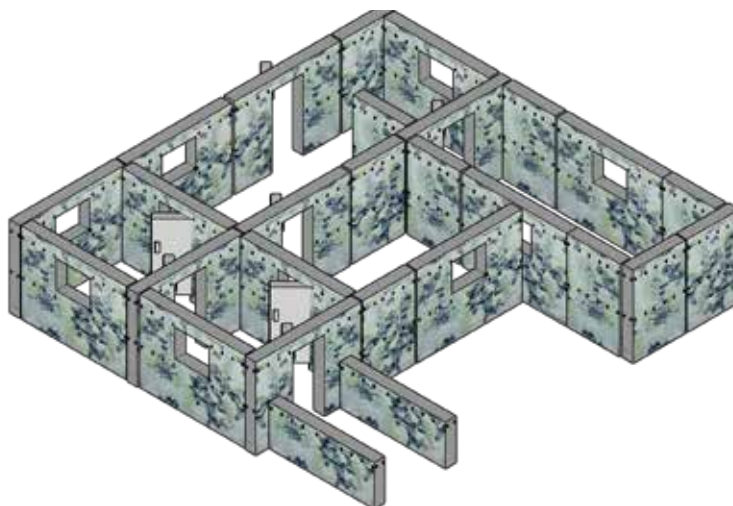
Available in two different options, the expansion packs are a quick and easy way to upgrade your IWTS package and expand your build.

Wall / Pack	Expansion 1	Expansion 2	Expansion Breach
Full Wall	4	0	1
Window Wall	4	8	1
Door	4	6	
1/2 Horizontal		2	
1/2 Vertical	4	6	
Breach Door			1
Total Weight	450kg / 992lbs	93kg / 205lbs	581kg / 1281lbs
Storage Space	1.68m ³ (59.3ft ³)	1.68m ³ (59.3ft ³)	3.1m ³ (109.5ft ³)
Pallet Space	1	1	1
Part Number	5363800X	5364000X	5363900X
Total Build Space	61.2m ²	84.6m ²	10.2m ²

EXPANSION PACK 1

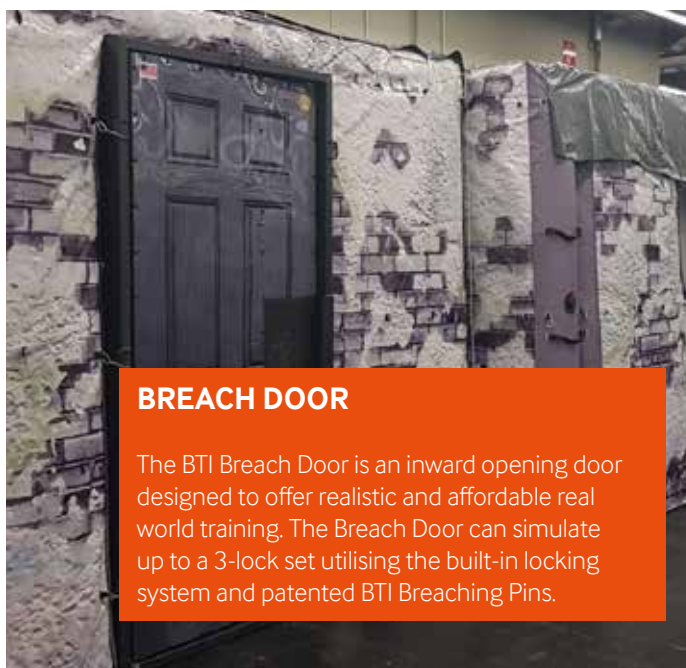


EXPANSION PACK 2



FLEXIBLE ROOF SYSTEM

The Flexible Roofing System covers the full length of your chosen IWTS structure. The roof is easily attached to the top of the walls via our carabiner system and increases functionality to include low light conditions for NVG training and smoke/fog containment.



BREACH DOOR

The BTI Breach Door is an inward opening door designed to offer realistic and affordable real world training. The Breach Door can simulate up to a 3-lock set utilising the built-in locking system and patented BTI Breaching Pins.

THE BEST TRAINING SOLUTION AVAILABLE TODAY

	Survitec IWTS	Frame and Fabric Building	Partition Panels Wood/Metal	PVC Covered Foam	Vinyl Based Inflatable	ISO Shipping Container Compound
Rapidly deployable, portable and compactable	✓	X	X	X	✓	X
Use on any terrain, any environment, -40°C to +60°C	✓	X	X	X	X	X
Build any size room or design appearance	✓	X	X	X	X	X
Five year guarantee and totally reusable	✓	X	X	X	X	X
Resistant to ALL training ammunition	✓	X	✓	X	X	✓
Safe for trainee impact	✓	X	X	✓	✓	X
Flat packable and easy to transport	✓	X	X	X	X	X
Small storage footprint	✓	X	X	X	X	X
Customisable exterior for realism	✓	X	X	X	X	X

*Five year guarantee – conditions apply, details available upon request



A TRUSTED TECHNOLOGY

Inflatable technology is a tried and tested stable military solution, and there is no other inflatable equipment in the world with experience quite like ours. Some of the largest Defence organisations in the world rely on it every day for their safety, and know that it is waiting patiently to aid them if all else fails. Our inflatable technology has been cleverly developed for over 9 decades, deployed in the most complex structures. It has been dragged, burnt, frozen, vacuum packed, wind blasted, subjected to 9 G force speeds and has been exposed to some of the worst chemical substances in the world. This same technology is the very DNA of IWTS. Our customers know that if it bears the Survitec name, it will feature all of the hallmarks of our reputation – intelligent/rapid inflation, practical end user driven designs, tough, rigorous structure and complete reliability.



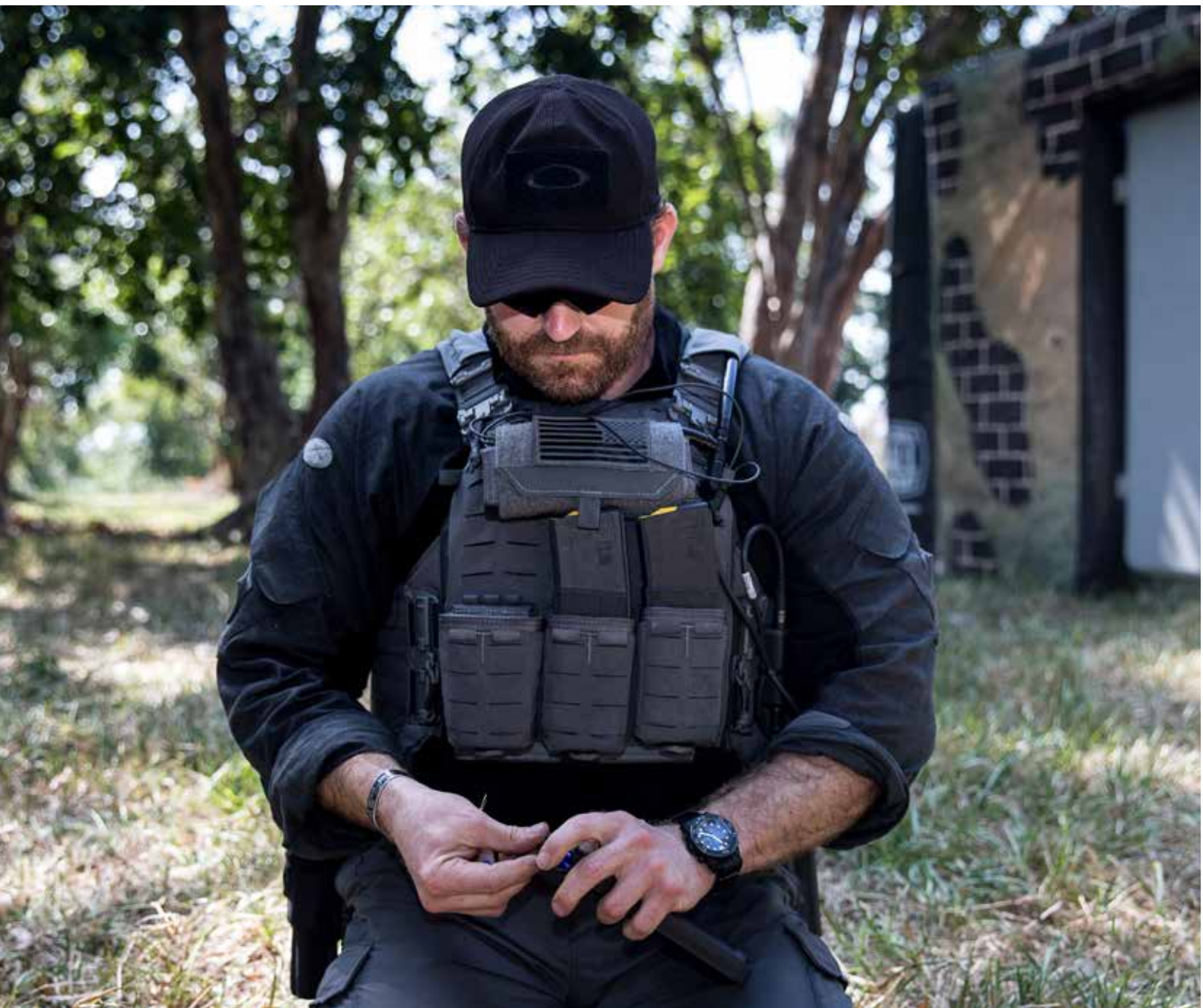
THE COMPLETE TACTICAL SHOOT HOUSE CAPABILITY

We partner with only the leading tactical companies to bring you the most immersive training experience. This includes best in class training ammunition and intelligent targeting systems.



FitLight is an interactive targeting system that is placed inside the walls during training. Each target lights up as a different colour for immersive and unpredictable training. Green for civilian, red for target, etc. It also has live GPS tracking which provides after action review to measure the accuracy of each shot and reaction times.

IWTS is the only portable training environment endorsed by Simunition – the leading provider for training ammunition. IWTS has been tested to withstand Simunition (9mm and 5.56mm), standard NATO 5.56mm blank ammunition, L83A1 smoke grenade, L111 training grenade, hot rifle and pistol barrels and 6 bang distraction devices.

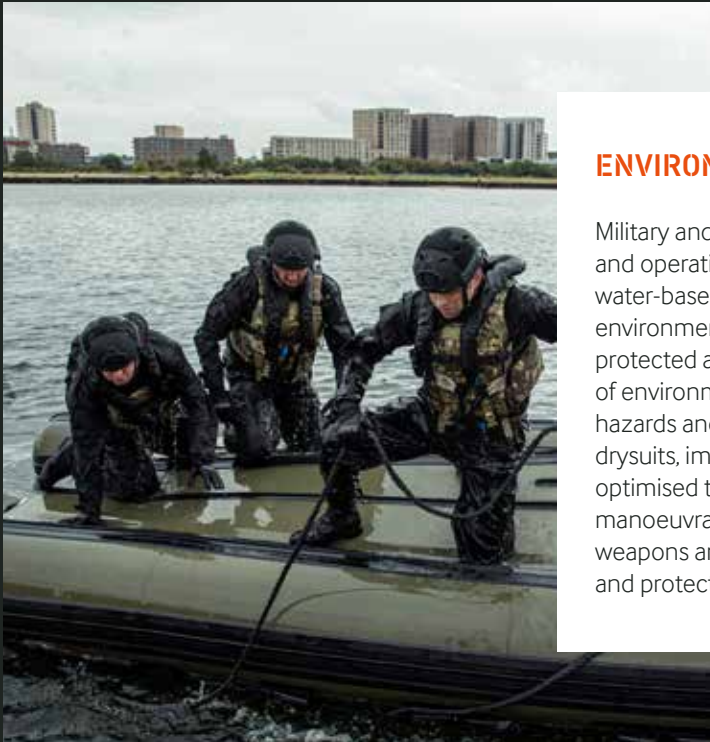


THE VERY BEST IN PERSONAL PROTECTION



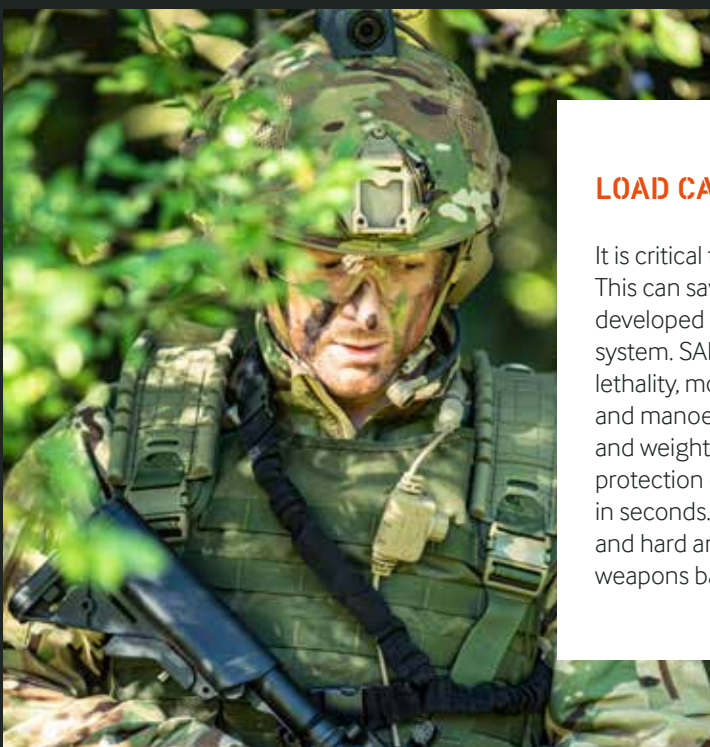
EQUIP YOUR PERSONNEL WITH THE VERY LATEST IN SAFETY & SURVIVAL TECHNOLOGY

Survitec offer a full training package for military and law enforcement operators – the physical training structure with IWTS and a broad portfolio of tactical personal protective equipment that can be used for training and deployed in real situations. Our customers benefit from a cost-effective package, a simplified and consolidated supply chain and a selection of fully integrated head to toe protective systems optimised for land and maritime based operations.



ENVIRONMENTALLY PROTECTIVE SUITS

Military and law enforcement face the most uncertain circumstances and operating environments. This includes breaching a structure from a water-based assault or facing a CBRN based threat. Interaction with their environment is enviable. It is therefore important that they remain fully protected and functional to complete their task. Survitec supply a number of environmentally protective suits, tailored to combat specific operational hazards and enhance user performance. Our range of suits, which includes drysuits, immersion suits and CBRN suits enable swimming in water, optimised thermal management through lightweight breathable material, manoeuvrability to perform kinetic tactical drills, the unhindered use of weapons and integration with additional equipment including load carriage and protection, lifejackets and CBRN protective head, hand and footwear.



LOAD CARRIAGE & PROTECTION

It is critical that tactical operators are equipped with the appropriate armour. This can save their lives when faced with a ballistic threat. Survitec has developed a new load carriage and protection solution called the SABRE system. SABRE was developed with the purpose of enhancing a user's lethality, mobility and survivability. SABRE grants its wearer enhanced flexibility and manoeuvrability allowing full articulation, improved thermal burden and weight distribution, greater ballistic coverage, including tailored tier 2 protection of the perineum area and quick release options, enabling doffing in seconds. The system is also fully modular with the ability to scale soft and hard armour protection and additional equipment such as comms and weapons based on threat and mission profile.



GET IN TOUCH

SURVITEC

Kingsway, Dunmurry, Belfast BT17 9AF, United Kingdom

Email: iwts@survitecgroup.com

www.survitecgroup.com

IWTS is produced and Marketed by Survitec Group under an exclusive licence from Battlefield Sim Limited

Copyright Notice

The copyright, trademarks, domain names and other intellectual property rights in all material and information in this presentation belongs to Survitec Group Limited. All rights are reserved.

Disclaimer

This document provides general information about Survitec Group and its companies, its products and services, and summarises general capabilities and offerings which we deem to be of relevance to our customers. Whilst Survitec has taken appropriate steps to ensure the accuracy of the information contained in this document, Survitec gives no warranty regarding the accuracy or completeness of such information.

This presentation was prepared to provide information and does not constitute a contract. Survitec reserves the right, without prior notice, to change, delete, supplement, or otherwise amend at any time the information, images, and offerings contained in this presentation, or other documents. Survitec shall not be liable for any loss or damage of whatever nature (whether direct, indirect, consequential or other) that may arise as a result of any third party relying on the information contained in this document (but nothing in this disclaimer excludes liability for death or personal injury arising from negligence or any fraudulent misrepresentation).

For further detailed information, prices, terms and conditions, customers should contact Survitec at info@survitecgroup.com